

A Bag



YOU JUST
HAVE TO GET!



Spend \$150 & redeem the Tourist-only Tote Bag!
(first 100 per month)

*Terms and conditions apply. While stocks last.



HAVE

an enjoyable shopping experience filled with privileges.

ARTS, CRAFTS & GIFTS

Leo City Souvenir & Gift | #01-35

30% to 50% off regular-priced items

FASHION & ACCESSORIES

Crocodile | #02-77/78

10% off regular-priced items

DMK | #02-76

10% off regular-priced items

Good Supply & Co | #02-67

- 10% off regular-priced items
 - 15% off second item with min. \$200 spend
- Not valid for promotion items.



Good Supply & Co

Hush Puppies | #01-77

- 5% off 1 regular-priced item
 - 10% off 2 or more regular-priced items
- Valid for regular-priced footwear and bags. Valid at all Hush Puppies Footwear & Accessories with valid Passport or Tourist Reward programme. Not valid for small leather goods.

Crocodile

Crocodile



DMK



Hush Puppies



KIMOJ

KIMOJ | #01-85

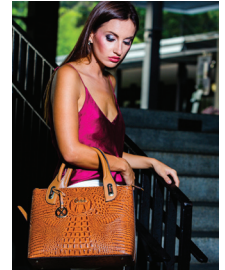
GlareMaster UV Eyewear (Latest Styles) at \$25 per pair or \$45 for 2 pairs (U.P. \$45 per pair)
Full UV400 protection eyewear.
Limited time offer.

Oxhide Leather | #01-73

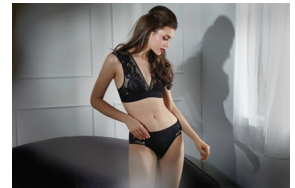
Free limited edition, genuine card holder for tourists
Collect from store.

Pierre Cardin | #02-18

10% off regular-priced items



Oxhide Leather



Pierre Cardin

FOOD & BEVERAGES

Dunkin' Donuts | #01-102

Free Regular Donut with min. spend of \$10
Not valid for premium donuts.

Tuk Tuk Cha | #02-01/02

- 50% off second drink
- \$1 off Coconut Ice Cream



Dunkin' Donuts



Tuk Tuk Cha



HEALTH & BEAUTY

GNC | #01-53

15% off regular-priced items
Not valid with ongoing promotions, VIP privileges, discount cards & vouchers.
Excludes foodstuff and nett-priced items.



GNC



Thai Sanctuary by Refresh Group Bodyworks

Thai Sanctuary by Refresh
Group Bodyworks | #03-44/46
10% off total bill

Tokyo Megane | #02-K7

Anteli polarised sunglasses @ \$50,
second pair @ 50% off
While stocks last.



Tokyo Megane

HOME & ELECTRICAL

Perfect Pix Lifestyle | #01-36/38

- Up to 50% off for selected electronic gadgets, mobile phones, cameras and accessories
- Free gift worth \$29.90 with any purchase

JEWELLERY & WATCHES

Maxi-Cash | #01-54

Extra 5% off LeGold 916 gold jewellery
Valid on fixed-priced LeGold 916 gold jewellery only.
Not valid with any other vouchers and promotions.



Maxi-Cash

SUPERMARKET & SPECIALTY

Taste Original (Organic Food) | #03-57

10% off regular-priced items with min. spend of \$20

Not valid for promotion items.



Taste Original (Organic Food)

.....
All offers are valid at HarbourFront Centre outlets from 1 Jan – 31 Dec 2018 unless otherwise stated. Tourist must present their HAVE Privilege Card and passport/travel documents before placing orders/making payments. Offers are not applicable for foreigners residing in Singapore and Working Pass holders. Prices listed may be subjected to service charge and prevailing government taxes where applicable. Offers cannot be exchanged for cash or used in conjunction with other promotions, discount/membership cards, loyalty programmes, discount/gift vouchers/coupons or sale items unless otherwise stated. Free items are available on a while-stocks-last basis and the participating stores reserve the right to substitute them with another item of similar value. Prices listed are in Singapore currency. Please check with respective outlets for complete details.
.....



DINING DELIGHTS

AT HABOURFRONT CENTRE

- | | | |
|--|------------------------------|-------------|
| | Bagus | #01-103/108 |
| | Ban Heng Pavilion Restaurant | #04-01/02 |
| | Baskin-Robbins | #01-100 |
| | Bee Cheng Hiang | #01-68 |
| | Bengawan Solo | #01-101 |
| | Dunkin' Donuts | #01-102 |
| | E.A.T. | #01-84 |
| | elemen | #02-85 |
| | Food Junction | #03-01/04 |
| | Four Leaves Express | #01-67 |
| | Han's | #01-13/14 |
| | Harry's | #01-64 |
| | Heavenly Wang | #01-83 |
| | Hitoyoshi Ramen | #01-99 |
| | KFC | #02-83/84 |
| | Koi Thé | #01-67A |
| | McDonald's | #01-86/89 |
| | Mos Burger | #01-95/97 |
| | Mr Bean | #01-K4 |
| | Pastamania | #02-05/07 |
| | Pizza Hut | #01-69 |
| | Seoul Garden | #01-65/66 |
| | Seoul Garden HotPot | #02-03/04 |
| | Simply Wrapps | #01-51/52 |
| | Starbucks Coffee | #01-75/76 |
| | Subway | #02-81/82 |
| | Swissbake | #01-58/60 |
| | The Coffee Bean & Tea Leaf | #02-124/126 |
| | The Orange Lantern | #01-98 |
| | Tuckshop | #03-19/21 |
| | Tuk Tuk Cha | #02-01/02 |
| | Xin Wang Hong Kong Café | #02-74/75 |
| | Ya Kun Kaya Toast | #03-59 |
| | Yoshinoya | #02-72/73 |



Halal Certified



Vegetarian

Customer Services

Customer Service Counter

Located on Level 1.

Open from 10am to 10pm daily.

www.harbourfrontcentre.com.sg

Nursing Rooms

Located at Lobby A, Level 2 & 3.

Rental of Baby Strollers

Available at Customer Service Counter.

Terms and conditions apply.

Sale of Mapletree Gift Vouchers

The perfect gift, anytime.

Call **6377 6311** for enquiries.

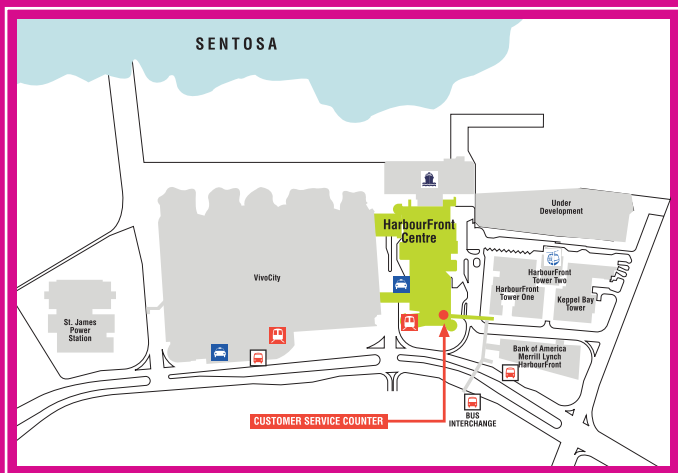
Wi-Fi™ Service

Free Wi-Fi™ Internet Service available at selected areas.

Singapore Cruise Centre

For more information on ferry/cruise schedules, please call hotline 6513 2200 or log on to

www.singaporecruise.com



 TAXI STAND  BUS STOP  MRT STATION  CABLE CARS  CRUISE CENTRE

HAVE A GREAT TIME EXPLORING SINGAPORE AND OUR NEIGHBOURS!



AEROLINE

#02-52

Comfort meets convenience with Aeroline's direct city-to-city travel for seamless connection to 3 locations in Kuala Lumpur. Experience onboard comforts, including a business lounge and onboard Cabin Crew service, as a trained Coach Captain connects you to your destination safely and without hassle!

Visit www.aeroline.com.sg or call +65 6258 8800.

BATAM FAST

#02-50/51

With 35 scheduled departures between 6 ferry terminals and on 5 routes, shuttling between Singapore and Pulau Batam has never been easier. Stops include Batam Center, Sekupang, Harbour Bay and Nongsapura. Book online via www.batamfast.com.

For more information, visit our website or call +65 6270 2228.

INDO FALCON

#03-42

Your one-stop travel planner for both Leisure & Corporate Travel to Batam, Bintan and Tanjung Pinang, Asia & International Cruises with Royal Caribbean and SuperStar Virgo. Go luxe with customised private functions on board the luxurious MV Falcon Princess.

Visit www.indofalcon.com.sg or call +65 6270 6778.

HORIZON FAST FERRY

#03-47

Travel with us on a 45-minute hassle-free journey from Singapore to Batam Harbour Bay Ferry Terminal. The terminal is a one-stop entertainment district, best known for its seafood, massages, hotels and shopping mall. Famous shopping cities Nagoya and Jodoh are merely five minutes away. Look forward to our new ferries, 'Horizon'.

Visit www.horizonfastferry.com or call +65 6276 6711.



Enjoy discounts at these attractions when you present your HAVE Privilege Card!



15% OFF
Singapore
Cable Car
Sky Pass
(Round Trip)

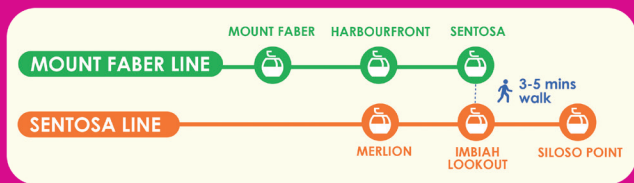


SINGAPORE CABLE CAR / FABER PEAK SINGAPORE

EXPERIENCE FABER PEAK SINGAPORE AND
SENTOSA ON THE CABLE CAR SKY NETWORK!

Enjoy not one but TWO cable car lines that connect TWO buzzing destinations—Sentosa and Faber Peak Singapore. Soar high above the two destinations through the sky on the most scenic highway in Singapore for priceless views. Fly high above the hill from Faber Peak Singapore, through a skyscraper and cross the harbour on the Mount Faber Line before landing on Sentosa island.

Then journey over the jungle, sand and sea on the Sentosa Line which will take you to dozens of attractions on Sentosa. Choose your stop at the Merlion station, Imbiah Lookout station and Siloso Point station to enjoy the sandy beaches, Sentosa Merlion, Madame Tussauds Singapore, Skyline Luge Sentosa, Universal Studios Singapore, S.E.A. Aquarium and more!



Daily: 8.45am – 10pm (last boarding: 9.30pm)

Visit: www.onefabergroup.com or call +65 6377 9688
for details about getting to Singapore Cable Car Stations.

Ticketing Counters: Mount Faber Station (Faber Peak Singapore), HarbourFront Station (HarbourFront Tower 2), Sentosa Station, Singapore Cruise Centre (Passenger Services)

Terms & Conditions:

Promotion is valid upon presentation of HAVE Privilege Card before payment at Singapore Cable Car ticketing counters only, for purchases from 1 Jan – 31 Dec 2018. Cable Car Sky Pass Round Trip entitles you to one round trip on Mount Faber Line and Sentosa Line only. Last boarding time for Singapore Cable Car Joyride is at 9.30pm (unless otherwise stated). Child is defined as 4 to 12 years old. Free admission for children below 4 years old. Mount Faber Leisure Group reserves the right to request for presentation of documents for verification of age.